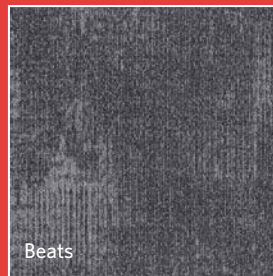
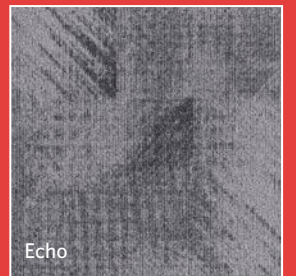




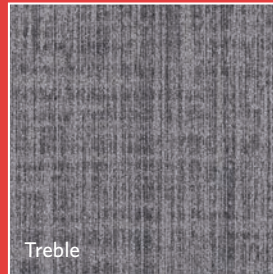
AMPLIFIER



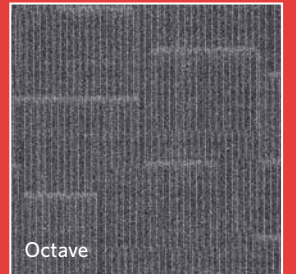
Beats



Echo



Treble



Octave



Ontera
A MILLIKEN COMPANY



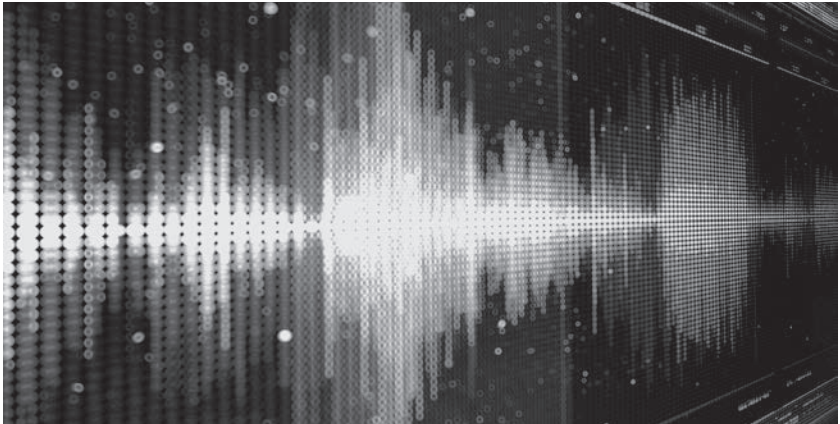
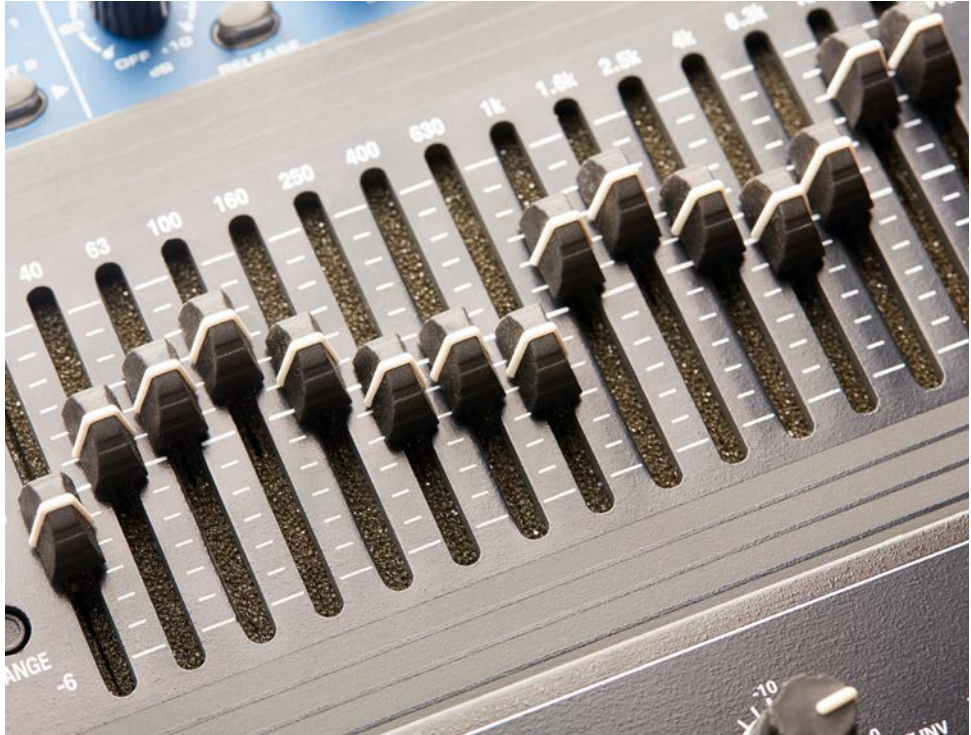
INSPIRED. INSPIRING.

An amplifier makes performance possible. As an electronic device for increasing the amplitude and power of electric signals, the amplifier is used to increase the volume and set a memorable tone.

Inspired by four unique elements of sound - Beats, Echo, Octave, and Treble - the Amplifier collection offers subtle accents with a defined rhythmic quality, reverberation of unique ripples between different notes and the creative impulse of high-frequency sound.



Beats in Fusion, brick ashlar installation





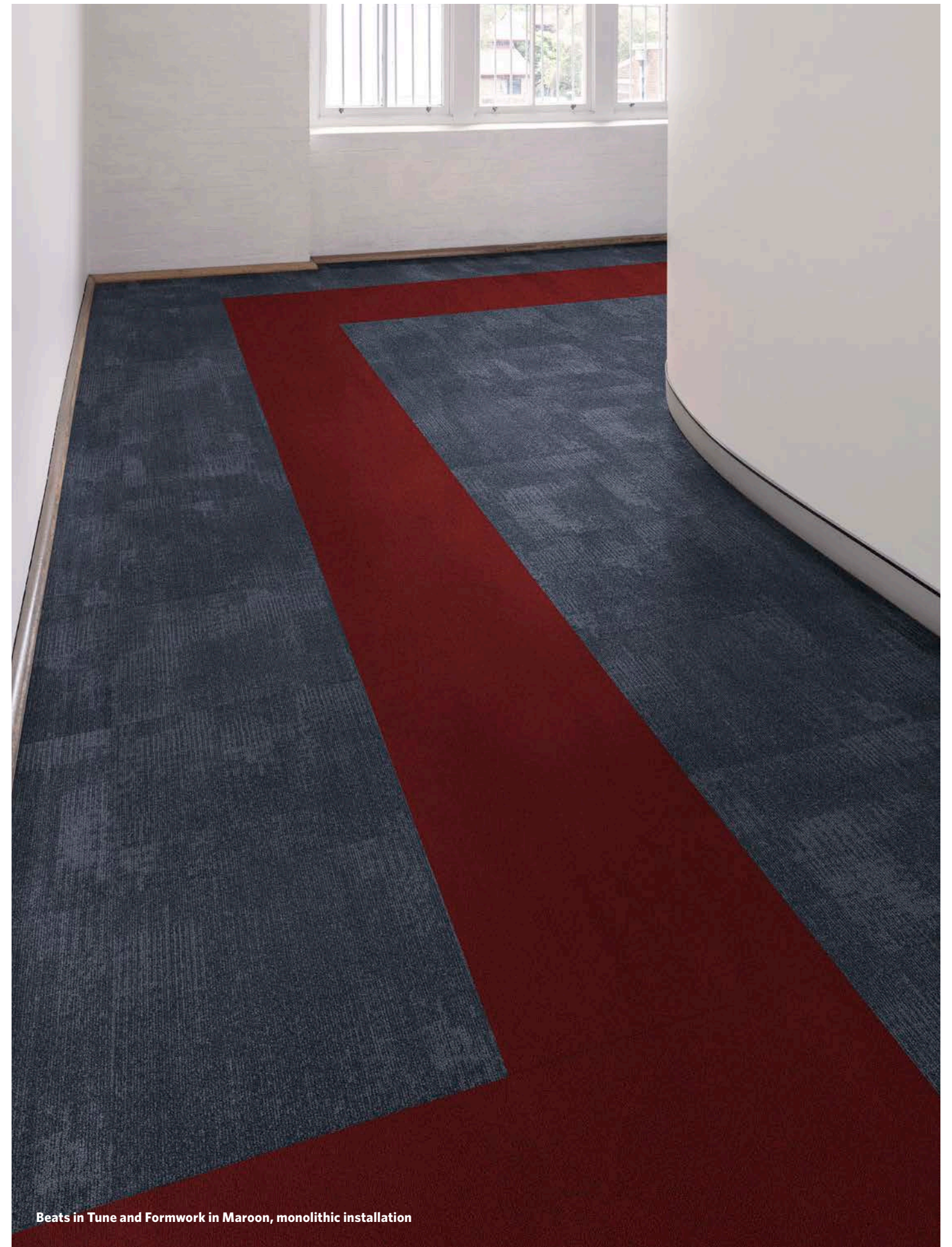
Echo in Tune, monolithic installation



Treble in Fusion, monolithic installation



Octave in Pitch, brick ashlar installation



Beats in Tune and Formwork in Maroon, monolithic installation



Beats in Chord, brick ashlar installation (left) and Treble in Chord, monolithic installation (right)



Echo in Pitch, multidirectional installation with Formwork in Blossom, monolithic installation



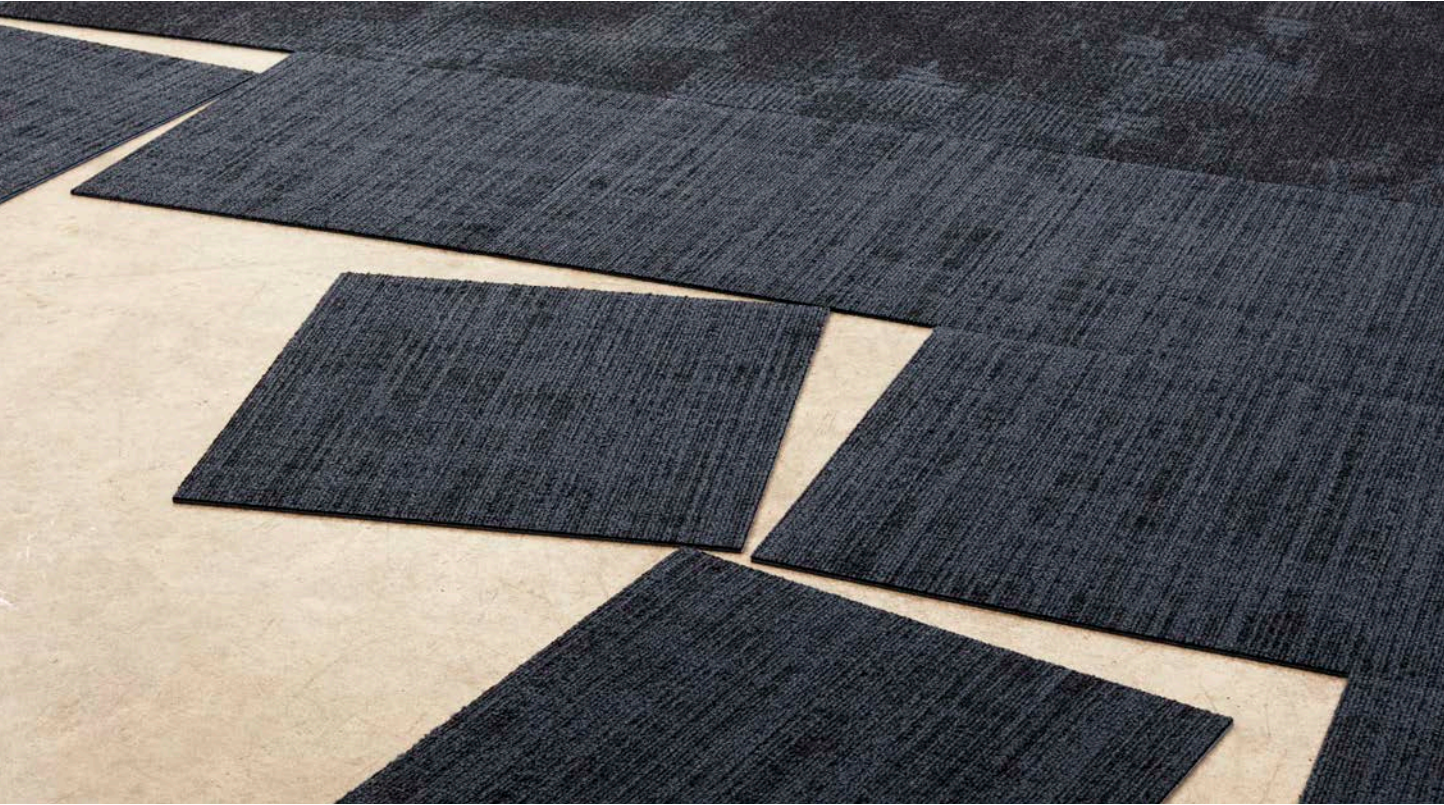
Treble in Fusion, monolithic installation (top) with Echo in Fusion, monolithic installation (bottom)



Octave in Fusion, quarter turn installation with Formwork in Pitch, monolithic installation

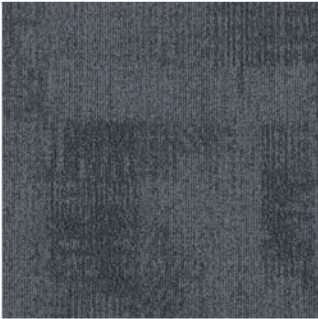


Treble and Beats in Tune, monolithic installation

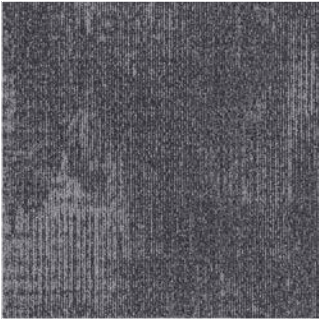


COLOURLINE

Beats



BTS119-154 FUSION 48



BTS27-174 CHORD 48

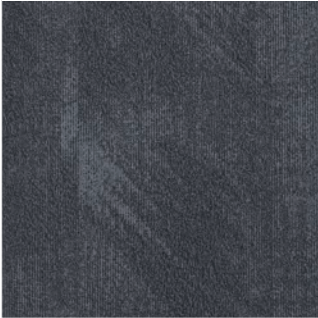


BTS154-180 PITCH 48

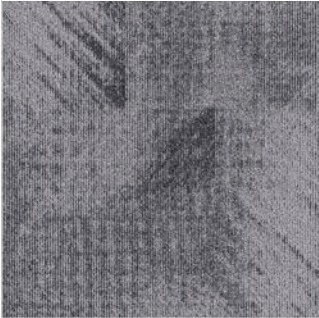


BTS27-73 TUNE 48

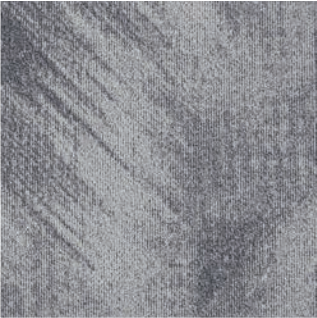
Echo



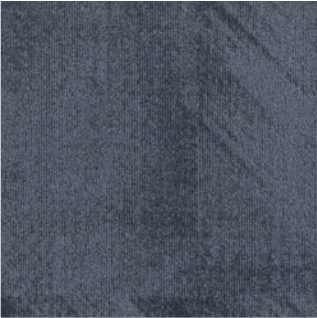
ECH119-154 FUSION 48



ECH27-174 CHORD 48

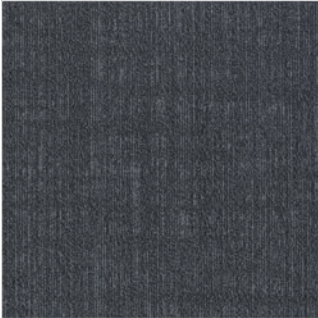


ECH154-180 PITCH 48

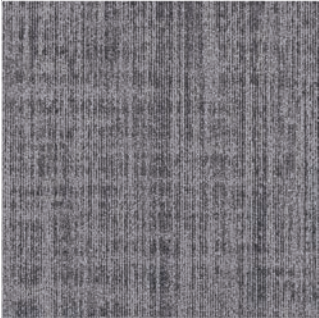


ECH27-73 TUNE 48

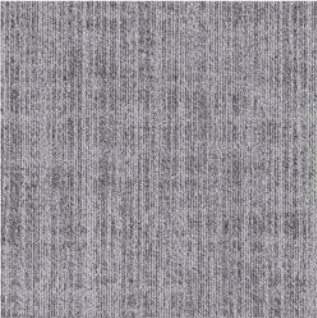
Treble



TBL119-154 FUSION 48



TBL27-174 CHORD 48

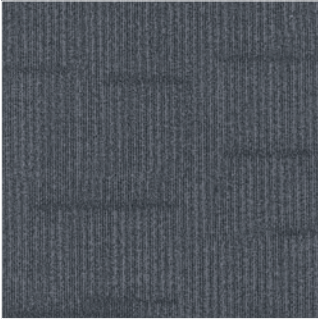


TBL154-180 PITCH 48

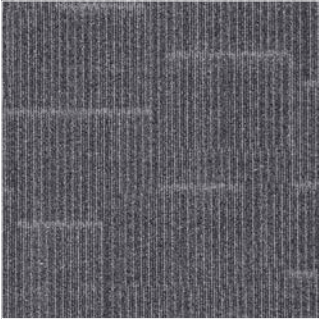


TBL27-73 TUNE 48

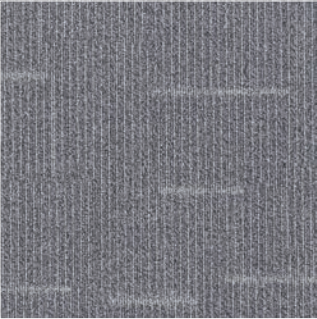
Octave



OCT119-154 FUSION 48



OCT27-174 CHORD 48



OCT154-180 PITCH 48



OCT27-73 TUNE 48

SERVICE 48 Quick Ship
48 Hour Service

Colours indicated with this symbol are included in the 48 Hour Quick Ship programme - up to 500 square meters, available for despatch within 48 Hours of order placement.

AMPLIFIER

SPECIFICATION

Construction

Tufted, Textured Loop

Tile Size

50 cm x 50 cm

Yarn Type

100% Universal® Nylon Type 6

Antimicrobial

AlphaSan® AF Built-In Protection†

Dye Method

Solution Dyed

Tufts

Beats and Echo: 120/in²
(1,858/100 cm²)

Treble and Octave: 109.7/in²
(1,699/100 cm²)

Gauge

1/12

Stitches Per Inch

Beats and Echo: 10
Treble and Octave: 9.144

Standard Backing

B2™ Hard Back

Nominal Total Thickness

Beats and Echo: 0.22" (5.60mm)
Treble and Octave: 0.2" (5.30mm)

Pile Thickness

Beats and Echo: 0.11" (2.79 mm)
Treble and Octave: 0.0788" (2.00 mm)

Applicable Warranties

15 year product warranty

Installation Method(s)



Monolithic
(Beats, Echo, Treble)



Quarter Turn
(Beats, Echo, Treble)



Brick Ashlar
(Octave)



Random
(Echo)



green building council australia
MEMBER

Declare.

Ontera
A MILLIKEN COMPANY

Australia

Toll Free: 1800 668372

New Zealand

Toll Free: 0800 668372

† Contains AlphaSan® antimicrobial treatment to reduce the growth of bacteria, mold and mildew that can cause odours or staining.

This Milliken product is covered by one or more patents, published applications and/or patents pending. Specifications are subject to normal manufacturing tolerances and may be changed without prior notice.



Growing greener for over 100 years.
Visit milliken.com for more information.